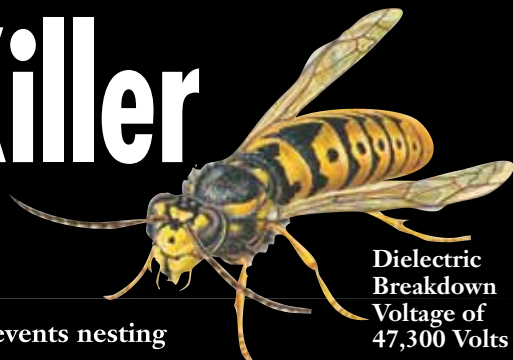


BONIDE

Wasp & Hornet Killer



Dielectric
Breakdown
Voltage of
47,300 Volts

- Prevents nesting
- Jet spray will reach nests up to 20' above ground
- Kills Wasps, Hornets & Carpenter Bees on contact
- Kills the entire nest

ACTIVE INGREDIENTS

Tetramethrin	(CAS No. 7696-12-0)	0.10%
Permethrin	(CAS No. 52845-53-1)	0.25%
Piperonyl Butoxide, Technical	(CAS No. 51-03-6)	0.50%
OTHER INGREDIENTS		99.15%
Total		100.00%

* Contains Petroleum Distillates

EPA Est. No. 11623-GA-1(G), 11715-TN-1(T), 10806-NJ-1(N), 5693-MA-1(MA)
EPA Reg. No. 4-392

KEEP OUT OF REACH OF CHILDREN CAUTION

(See back panel for additional precautionary statements.)

READ ENTIRE LABEL BEFORE EACH USE.

DIRECTIONS FOR USE

It is a violation of Federal law to use this product in a manner inconsistent with its labeling. Intended for residential use.

Restrictions

Except when applying to dogs or livestock, do not apply this product in a way that will contact adults, children, or pets, either directly or through drift. Except when applying to dogs or livestock, only protected handlers may be in the area during application; do not enter or allow others to enter until sprays have dried and vapors, mists, and aerosols have dispersed, and the treated area has been thoroughly ventilated. Do not remain in treated area. Exit area immediately and remain outside the treated area until aerosols, vapors, and/or mists have dispersed.

Not for broadcast on indoor residential surfaces. Do not apply when food is present. Remove or cover dishes, utensils, food processing equipment, and food preparation surfaces, or wash them before reuse. Do not use in food areas of food handling establishments, restaurants or other areas where food is commercially prepared or processed. Do not use in serving areas while food is exposed or facility is in operation. Serving areas are areas where prepared foods are served, such as dining rooms, but excluding areas where foods may be prepared or held.

Application is prohibited directly into sewers or drains, or to any area like a gutter where drainage to sewers, storm drains, water bodies, or aquatic habitat can occur. Do not allow the product to enter any drain during or after application.

All outdoor applications must be limited to spot or crack-and-crevice treatments only, except for the following permitted uses:

- (1) Treatment to soil or vegetation around structures;
- (2) Applications to building foundations, up to a maximum height of 3 feet.

Other than applications to building foundations, all outdoor applications to impervious surfaces such as sidewalks, driveways, patios, porches and structural surfaces (such as windows, doors, and eaves) are limited to spot and crack-and-crevice applications only.

OUTDOORS

Do not water the treated area to the point of run-off. Do not make applications during rain.

To kill Wasps, Hornets, Yellow Jackets and Carpenter Bees under eaves, screens, window frames, doors, patios, cracks, holes or crevices wherever insects are noticed, spray for about 1-2 seconds or until surfaces are moist. To prevent entrance of insects into the house, spray around points where insects enter such as outside plumbing, faucets, etc., and cracks or crevices in foundation up to a maximum height of 3 feet, as well as along sills and ledges. Remove all exposed food and cooking utensils. Cover all food handling surfaces or wash thoroughly after treatment and before use. Do not use on edible crops.

For best results, spray in early morning or late evening when insect activity is minimal. Stand a safe distance from nest and not directly underneath. (Remove protective cap.) Hold can upright and point spray opening toward nest with wind at your back. Spray until nest is thoroughly saturated to kill the entire nest population. Residual action will kill wasps and hornets returning to the nest. Wait at least 24 hours before removing the nest.

Mud Daubers: Spray directly on insects and their nests from approximately 2 feet away. Applications should be made in late evening when insects are at rest. Spray into hiding and breeding places contacting as many insects as possible.

STORAGE AND DISPOSAL

Pesticide Storage: Store and transport in an upright position. Store in a cool dry area inaccessible to children or pets.

Container Handling & Disposal: Do not puncture or incinerate. *If empty* – Place in trash or offer for recycling if available. *If partly filled* – Call your local solid waste agency for disposal instructions.

FIRST AID

Have the product container or label with you when calling a poison control center or doctor, or going for treatment. You may also contact the National Pesticide Information Center at 1-800-858-7378 for emergency medical treatment information.

If in Eyes:

- Hold eye open and rinse slowly and gently with water for 15-20 minutes.
- Remove contact lenses, if present, after the first 5 minutes, then continue rinsing eye.
- Call a poison control center or doctor for treatment advice.

Note to Physician: Contains petroleum distillate. May pose an aspiration pneumonia hazard.

PRECAUTIONARY STATEMENTS

HAZARDS TO HUMANS AND DOMESTIC ANIMALS

CAUTION: Causes moderate eye irritation. Avoid contact with eyes or clothing. Wash thoroughly with soap and water after handling. Prolonged or frequently repeated skin contact may cause allergic reactions in some individuals. Remove contaminated clothing and wash clothing before reuse.

ENVIRONMENTAL HAZARDS

This pesticide is extremely toxic to aquatic organisms, including fish and invertebrates. Do not apply directly to water. Do not apply when weather conditions favor drift from treated areas. Drift and runoff from treated areas may be hazardous to aquatic organisms in neighboring areas. See Directions for Use for additional precautions and requirements.

This pesticide is highly toxic to bees exposed to direct treatment on blooming crops or weeds. Do not apply this product or allow it to drift to blooming crops or weeds while bees are actively visiting the treatment area.

PHYSICAL OR CHEMICAL HAZARDS

Contents under pressure. Keep away from heat, sparks and open flame. Do not puncture or incinerate container. Exposure to temperatures above 130° F may cause bursting.

For information on pesticide products (including health concerns, medical emergencies, or pesticide incidents), call the National Pesticide Information Center at 1-800-858-7378.

Notice: To the extent consistent with applicable law, buyer assumes all responsibility for safety and use not in accordance with directions.

Bonide Products, Inc.
6301 Sutliff Road
Oriskany, NY 13424
©Bonide Products, Inc.
All Rights Reserved